



BSF70 FOLDING DOOR SYSTEM

Versatile and flexible, the market leading BSF70 aluminium folding door system is available in a wide range of configurations to create the look you desire. Multiple doors can be combined with open-in or open-out options, in a variety of styles to create a wide expanse of opening. The narrow profile ensures that maximum glazing is achieved, flooding rooms with light.

DESIGN FEATURES

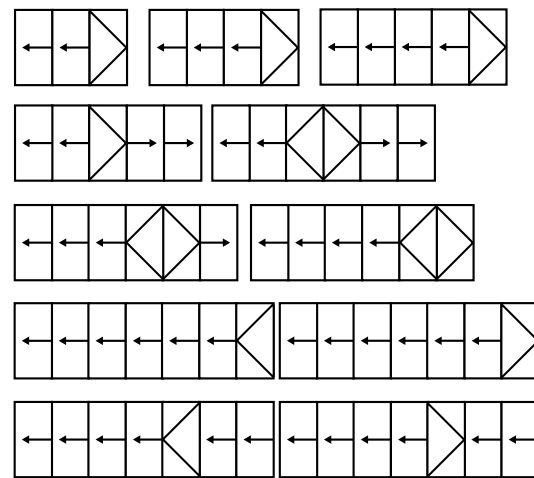
- Internally beaded with a soffline or square detail to all external doors and panels
- Chamfered and square bead options
- Four stainless steel wheels ensures smooth and consistent operation
- Unique, flush line pop-out handle that allows maximum door opening and square stacking panels
- Low threshold option which can be configured to achieve DDA and Part M compliance
- Certified under Secured by Design scheme

OPTIONS

- Doors and panels can be used in a variety of configurations, style and design
- All configurations are available in both open-in and open-out options
- Full range of bespoke hardware available
- Glazing sizing range of 28mm – 44mm
- Available in single or dual colour option, polyester powder coating and anodised finishes

CONFIGURATIONS

The BSF70 folding door system is available in a wide range of configurations as demonstrated below. Panels can be stacked inside or outside, to the left or right, or split stacked on both sides.



BSF70 FOLDING DOOR SYSTEM TECHNICAL SPECIFICATIONS

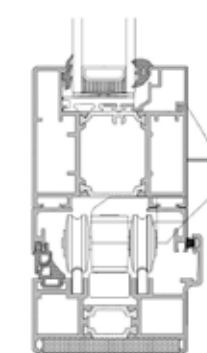
Combining high security hinges and locking mechanisms with a unique high strength roller designs, the BSF70 aluminium folding door system provides the security and reliability demanded in high traffic applications. Doors can be manufactured to replace

whole walls and a full range of colours are available, including single or dual aspect. Anodised finishes are also available with marine grade guarantees on request.

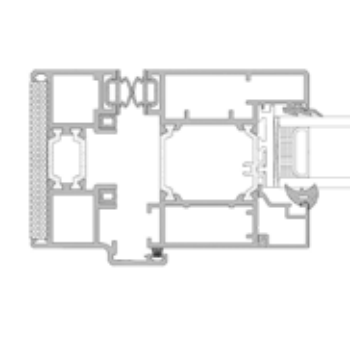
| SPECIFICATIONS | FOLDING SLIDING | SINGLE & DOUBLE DOOR |
|--|--------------------------|--------------------------|
| Performance & Accreditation | | |
| U-Value (Double Glazing)* | 1.7 W/m ² K | 1.8 W/m ² K |
| U-Value (Triple Glazing)** | 1.6 W/m ² K | 1.4 W/m ² K |
| Green Guide Rating | A Rated | A Rated |
| Acoustic Performance (dB) | Rw (C;Ctr) 36 (-1;-3) dB | Rw (C;Ctr) 36 (-1;-3) dB |
| Air Tightness (Pa) | Class 4 | Class 4 |
| Water Tightness (Pa) | Class 7a | Class 7a |
| Wind Load (Pa) | Class E2400 | Class E2400 |
| Security | PAS 24 | PAS 24 |
| Configurations | | |
| Opening | Open In & Open Out | Open In & Open Out |
| 2-2-0 | ● | -- |
| 3-3-0 | ● | -- |
| 3-2-1 | ● | -- |
| 4-4-0 | ● | -- |
| 4-2-2 | ● | -- |
| 4-3-1 | ● | -- |
| 5-5-0 | ● | -- |
| 5-3-2 | ● | -- |
| 5-4-1 | ● | -- |
| 6-6-0 | ● | -- |
| 6-3-3 | ● | -- |
| 6-4-2 | ● | -- |
| 6-5-1 | ● | -- |
| 7-7-0 | ● | -- |
| 7-4-3 | ● | -- |
| 7-5-2 | ● | -- |
| 7-6-1 | ● | -- |
| Size Limits | | |
| Max Vent Weight | 100 Kg | 100 Kg |
| System Features | | |
| Frame Options | 70mm | 94mm 70mm |
| Dual Colour Option | ● | ● |
| Multi-Point Locking | ● | ● |
| Glazing Options | Internal | Internal |
| Glazing Thickness | 24mm-44mm | 24mm-44mm |

CAD CROSS SECTION AND THERMAL PROFILE

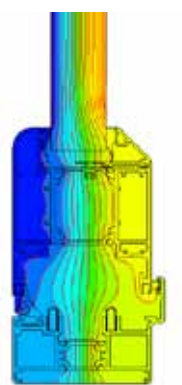
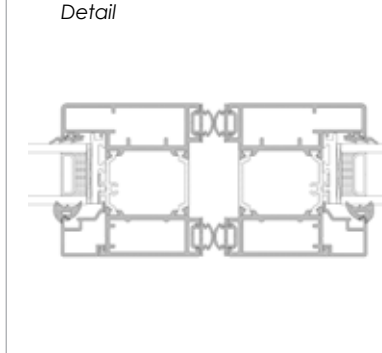
Cill Detail



Jamb Detail



Leaf-Leaf Detail



* Door U-Values based on CEN size ≤ 3600mm² using 1.2 W/m²K double glazing with warm edge Swisspacer V bar. ** U-Values based on CEN size ≤ 3600mm² using 0.7 W/m²K triple glazing with warm edge Swisspacer V bar. All weather test data taken from BS EN 6375-1 (Part of Pas 23) based upon highest performing door configuration. Sound insulation values are Rw reduction values and are based on tests using acoustic glazing.

Please note: NBS Specifications are available for all products and BIM Components for many. Please visit www.aluk.co.uk to download CAD files, BIM Components and NBS Specifications.